



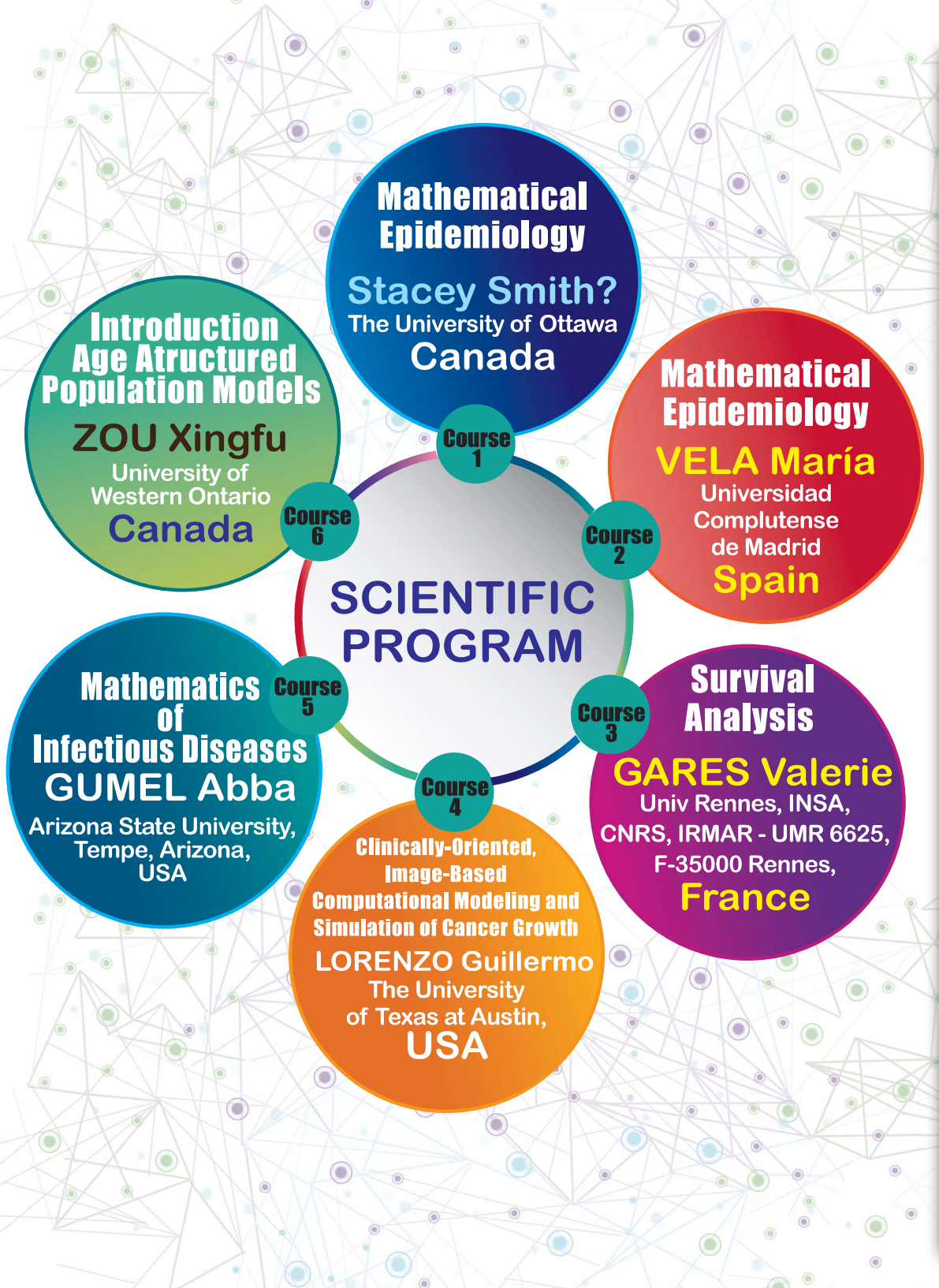
# CIMPA SUMMER RESEARCH SCHOOL in MATHEMATICAL EPIDEMIOLOGY/BIOLOGY UNIVERSITY OF DHAKA, DHAKA, BANGLADESH May 09-20, 2022



<http://www.cimpadu.org/>

Mathematical Biology emphasises on mathematical modeling, with biology the sole application area. Mathematical Biology is the most exciting modern application of mathematics. Now a days biology becomes more quantitative. The better models show how a process works and then predict what may follow. If these predictions are not already obvious to the biologists and the predictions turn out to be right, then the mathematicians would be the main key persons to the biologists.

In particular, mathematical modelling (and analysis) plays a major role in epidemiology in helping to address the various public health concern, by providing deeper qualitative insights into the underlying mechanisms for the spread of infectious diseases. Modelling also allows for the theoretical assessment of the potential impact of intervention strategies (both pharmaceutical and non-pharmaceutical) for controlling, or mitigating, the impact of the disease in a population.



#### PATRON

**Prof. Dr. Md. Akhtaruzzaman**  
Vice Chancellor  
University of Dhaka

#### Chairman

**Prof. Dr. Md. Shahidul Islam**  
University of Dhaka  
Mobile: 01819493767  
mshahidul11@yahoo.com

#### Administrative and Scientific Coordinators

**Chandra Nath Podder**  
University of Dhaka  
cpodder@du.ac.bd

**Jorge Mozo Fernández**  
University of Valladolid  
jorge.mozo@uva.es

#### Scientific Committee

**Jorge Mozo Fernández**  
University of Valladolid

**Lidia Fernández**  
Universidad de Granada

**Chandra Nath Podder**  
University of Dhaka

#### Organizing Committee

**Md. Shahidul Islam**  
University of Dhaka  
mshahidul11@yahoo.com

**Md. Showkat Ali**  
University of Dhaka  
msa@du.ac.bd

**S.M. Sohel Rana**  
University of Dhaka  
srana\_math@du.ac.bd

**Md. Kamrujjaman**  
University of Dhaka  
kamrujjaman@du.ac.bd

**Ashrafi Meher Niger**  
University of Dhaka  
ashrafiniger@gmail.com

#### VENUE

**A F Mujibur Rahman Ganit Bhaban**  
University of Dhaka, Dhaka-1000, Bangladesh.

#### IMPORTANT DATES

Registration Start : 1<sup>st</sup> October 2021  
Registration Deadline : 15<sup>th</sup> February 2022  
Participants Selection : 28<sup>th</sup> February 2022

#### REGISTRATION

For Local Participants:  
<https://www.cimpadu.com/>

For International Participant  
<https://www.cimpa.info/en/node/40>

#### CONTACT US

**Chandra Nath Podder**  
University of Dhaka  
cpodder@du.ac.bd  
Contact: +88 0 1756215695

Sponsors | A F Mujibur Rahman Foundation

| International Mathematical Union (IMU)

CIMPA: International Center for Pure and Applied Mathematics, <https://cimpa.info/>